

主要技术性能

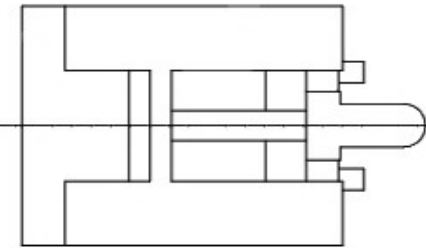
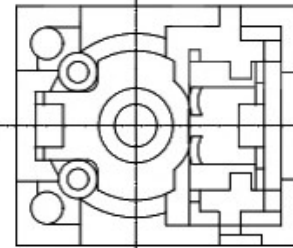
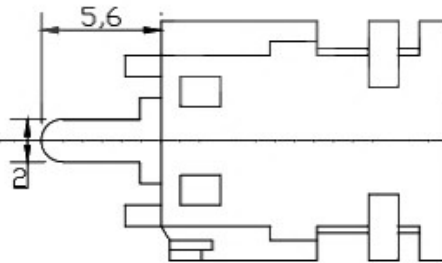
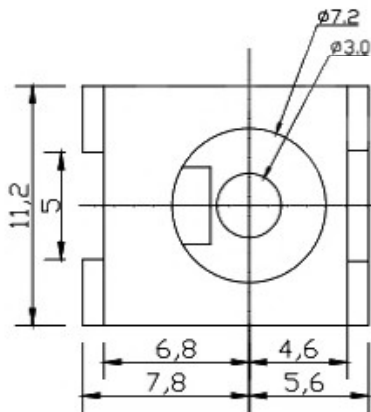
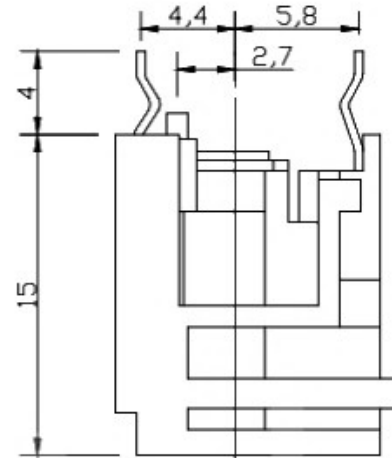
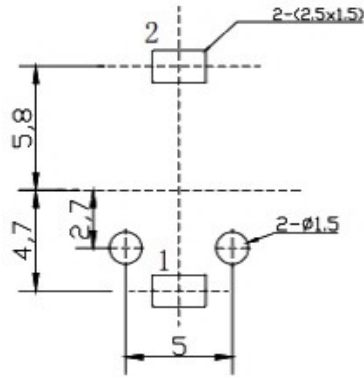
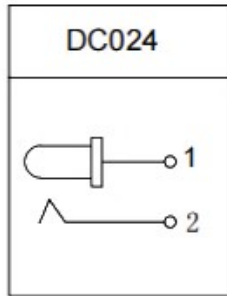
1. 额定电负荷：30V 1.0A;
2. 接触电阻： $\leq 0.03\Omega$;
3. 绝缘电阻： $\geq 100M\Omega$;
4. 耐压：AC500V (50Hz) min;
5. 插拔力：3-15N;
6. 寿命：5,000次。

主要技术要求

1. 未注线性公差:

- | | |
|-------------|--------------|
| 0.0-10.0mm | $\pm 0.10mm$ |
| 10.0-20.0mm | $\pm 0.15mm$ |
| 20.0-50.0mm | $\pm 0.20mm$ |

2. 外观应良好，无锈蚀、裂痕、电镀不良等现象。



DONG GUAN XI BANG ELECTRONIC CO., LTD

COPYRIGHT RESERVED, PLEASE DO NOT COPY.

PART NAME		DC POWER JACK		DRAWING		G.C.Chen		DWG.No.	
PART NO.				CHECK		G.C.Chen		REV. A	
UNIT :		TOLERANCE		ANGLE		APPROVAL		DATE	
mm		OTHERWISE		$0^{\circ}\pm 3'$		SCALE		PAGE	
		UP TO 10 ±0.1				2:1		1 OF 1	
		ABOVE 10~ 20 ±0.15							
		ABOVE 20~ 50 ±0.2							