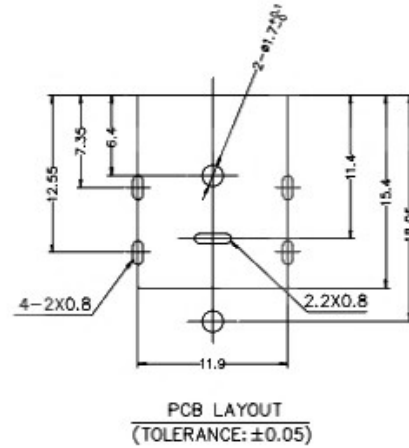
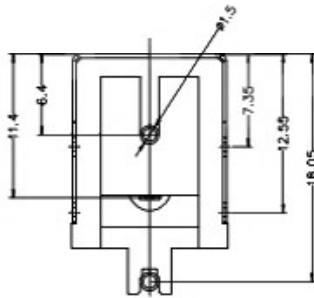


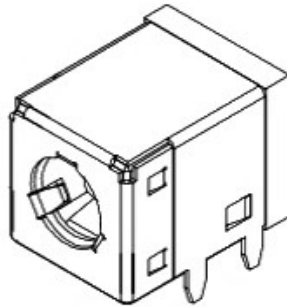
SCHEMATIC

ELECTRICAL
 VOLTAGE RATING:20V DC (R.M.S)
 CURRENT RATING:10 A
 CONTACT RESISTANCE:30mΩ MAX.
 INSULATION RESISTANCE:100 MΩ MIN.
 DIELECTRIC WITHSTAND VOLTAGE:500V AC (R.A.M)
 TEMPERATRUE RANGE:-25°C TO +85°C
 MATERIALS & PLATING: SEE THE TABLE BELOW.



PCB LAYOUT
(TOLERANCE:±0.05)

PIN	∅ 2.0	∅ 2.35	∅ 2.5
APPD.			



5	SHEEL	1	SPCC 0.3t	NI-PLATING
4	TERMINAL	1	H62 0.25t	CuSn-PLATING
3	PIN	1	H59	Ag-PLATING
2	SPRING	1	H65 0.25t	CuSn-PLATING
1	HOUSING	1	HIGH TEMP.THERMOPLASTIC	TA9T
LTR	PART NAME	QTY	MATERIAL(THICK,COLOR)	REMARK

DONG GUAN XI BANG ELECTRONIC CO., LTD

COPYRIGHT RESERVED,PLEASE DO NOT COPY.

PART NAME	DC POWER JACK		DRAWING	Y,C,ZHANG	DWG.No.	SBICL
PART NO.			CHECK	G.C.Chen	REV.	A1
UNIT : mm	TOLERANCE	UP TO 5	∅0.2	ANGLE	APPROVAL	DATE
	OTHERWISE	ABOVE 5 ~ 30	∅0.3	∅±3	SCALE	PAGE
		ABOVE 30	∅0.5		2:1	1 OF 1
		ANGLE	±5			