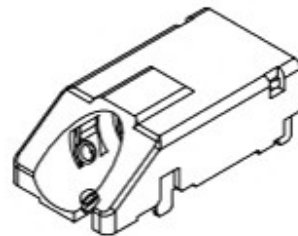
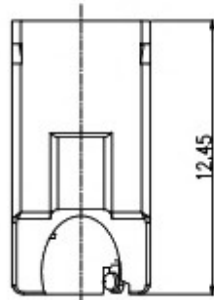
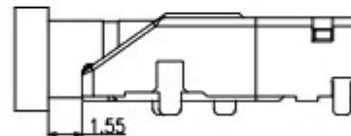


NOTES:

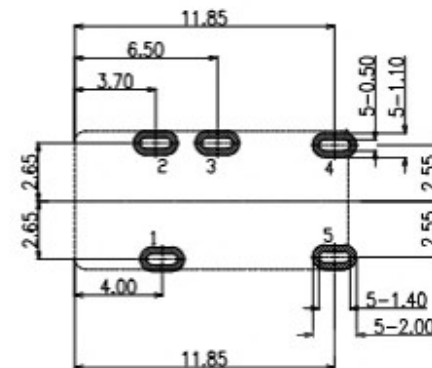
- CONTACT CURRENT RATING: 1A.
- CONTACT RESISTANCE: 50 mΩ MAX.;
- INSULATION RESISTANCE: 100MΩ MIN.;
- DIELECTRIC WITHSTANDING: 500V AC MIN.;
- DURABILITY: 5,000 CYCLES MIN.;
- CONNECTOR MATING FORCES: 30N MAX.;
- CONNECTOR UNMATING FORCES: 3N MIN.;



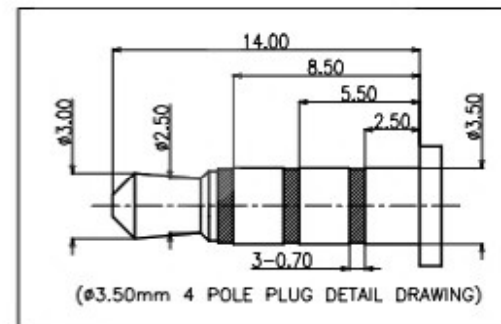
3D VIEW



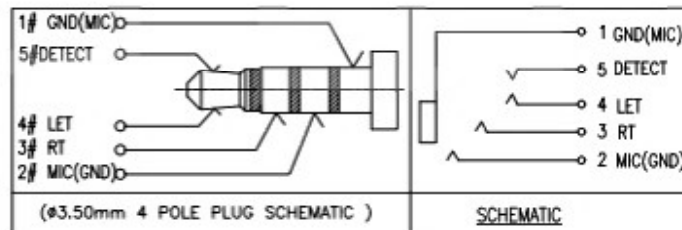
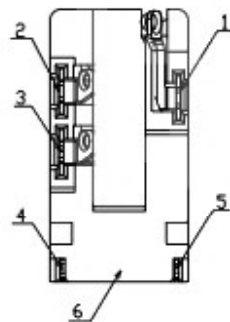
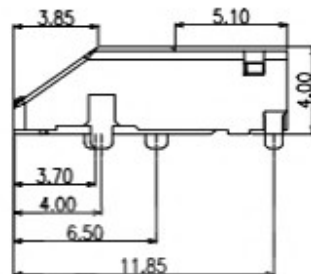
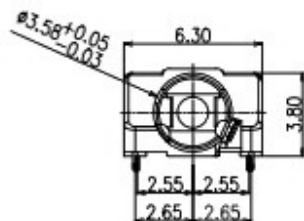
PLUG MATE DRAWING



RECOMMEND FPC LAYOUT
TOLERANCE :±0.05



(ø3.50mm 4 POLE PLUG DETAIL DRAWING)



(ø3.50mm 4 POLE PLUG SCHEMATIC)

SCHEMATIC

6	HOUSING	1	HIGHT TEMPERATURE PLASTIC; COLOR BLACK	
5	CONTACT 5#	1	STAINLESS STEEL; NICKEL UNDER PLATING OVERALL,GOLD FLASH PLATING ON SOLDER AREA ;GOLD FLASH PLATING ON CONTACT AREA	T=0.20mm
4	CONTACT 4#	1	STAINLESS STEEL; NICKEL UNDER PLATING OVERALL,GOLD FLASH PLATING ON SOLDER AREA ;GOLD FLASH PLATING ON CONTACT AREA	T=0.20mm
3	CONTACT 3#	1	COPPER ALLOY; NICKEL UNDER PLATING OVERALL,GOLD FLASH PLATING ON SOLDER AREA ;GOLD FLASH PLATING ON CONTACT AREA	T=0.20mm
2	CONTACT 2#	1		T=0.20mm
1	CONTACT 1#	1		T=0.20mm
ITEM	PART NAME	Q'TY	MATERIAL	REMARK

 东莞市溪榜电子有限公司

COPYRIGHT RESERVED,PLEASE DO NOT COPY.

PART NAME		PHONE JACK		DRAWING		Y,C,ZHANG		DWG.No.		SBICL	
PART NO.		PJ-625		CHECK		G.C.Chen		REV.		A1	
UNIT :	TOLERANCE	UP TO 5	±0.2	ANGLE	APPROVAL		DATE				
	OTHERWISE	ABOVE 5~30	±0.3		SCALE		2:1		PAGE		1 OF 1
mm		ABOVE 30	±0.5	0±5							