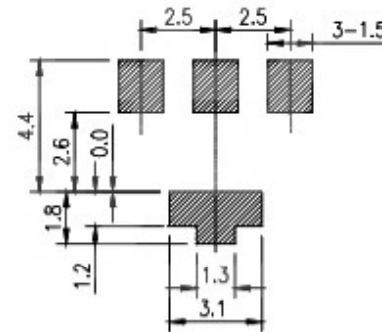
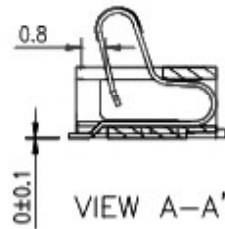
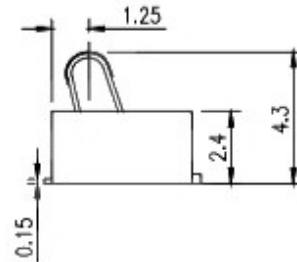
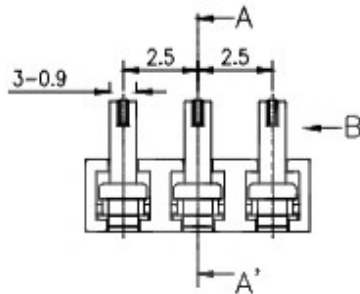
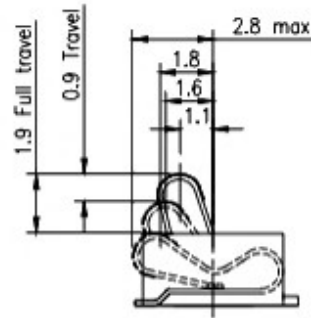
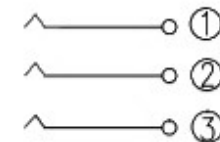


SPECIFICATIONS

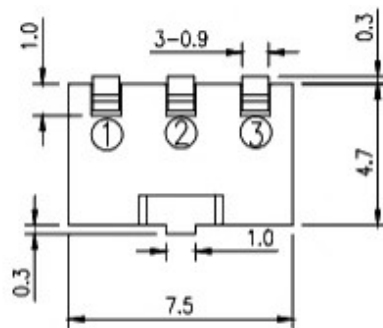
1. ELECTRICAL CHARACTERISTICS:
 - 1-1.RATING: DC 20V 3A max
 - 1-2.CONTACT RESISTANCE: 20mΩ MAX(INITAL)
 - 1-3.DIELECTRIC WITHSTANDING VOLTAGE: 500V AC FOR ONE MINUTE
 - 1-4.INSULATION RESISTANCE: 100MΩ MIN, MEASURED BY 500V DC
2. LIFE TEST:MECHANICAL LIFE TEST 10,000 CYCLES MIN
3. TEMPERATURE RISE : 30°C MAX




P.C.B LAYOUT



CIRCUIT



2	HOUSING	LCP	1	BLACK
1	CONTACT TERMINAL	BeCu	3	Au PLATED
NO.	PARTS	MATERIAL	QTY.	FINISHING

PART NAME		CONNECTOR		DRAWING	Y,C,ZHANG	DWG.No.	SBICL
PART NO.				CHECK	G.C.Chen	REV.	A1
	UNIT :	TOLERANCE	UP TO 5 ±0.2	APPROVAL		DATE	
	mm	OTHERWISE	ABOVE 5~30 ±0.3				