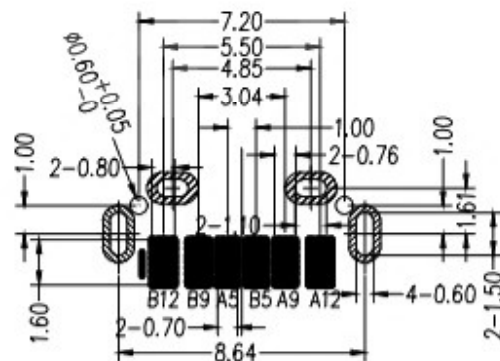
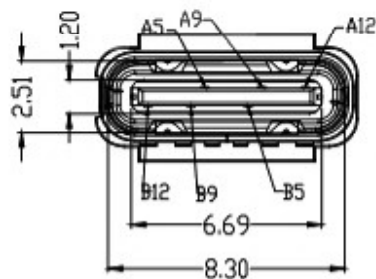
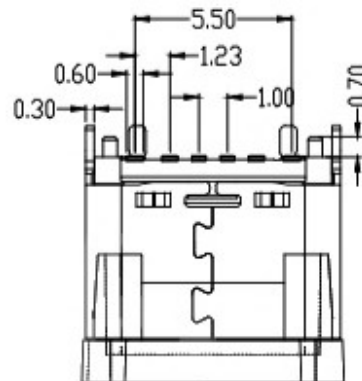
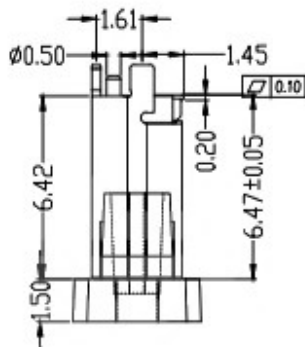
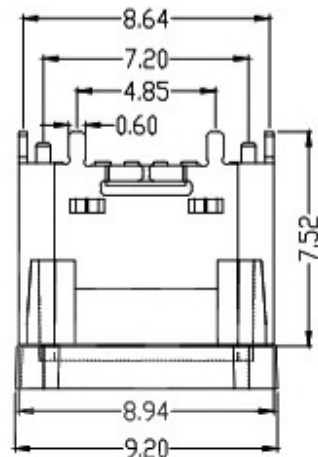
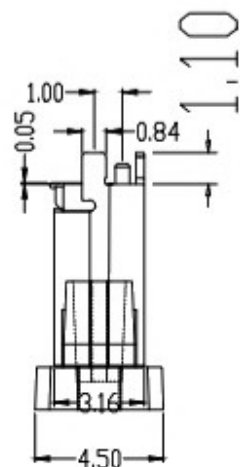
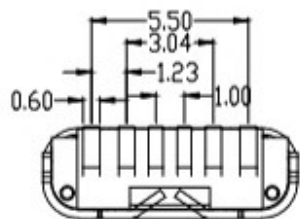


F RoHS Compliant 



RECOMMENDED P.C.B. LAYOUT  
TOLERANCE UNSPECIFIED ±0.05mm

NO.	DESCRIPTION	MATERIAL	REMARKS	QTY
3	SHELL	STAINLESS STEEL	N/Cu Plated	SPCS
2	CONTACT	BRASS	As Plated	1SET
1	MO	HIGH TEMPERATURE PLASTIC	BLACK	SPCS

B12	GND
B9	VBUS
B5	CC2
A5	CC1
A9	VBUS
A12	GND
PIN	SIGNAL NAME

1.Material:

InsertMolding:LCP UL 94V-0 Black  
Contact:Copper alloy,T=0.20mm  
Shell:Stainless Steel,T=0.30mm

2.Electrical

- 1.1.Rated Voltage: 30V AC/DC maximum
- 1.2.CURRENT RATING: 3A FOR VBUS, 1.25A FOR GND PIN,0.25A FOR OTHER.
- 1.3.INSULATION RESISTANCE:100MΩ MIN
- 1.4.CONTACT RESISTANCE: 50mΩ MAX

3.Mechanical

- 2.3.INSERT FORCE: 5~20N;
- 2.3.EXTRACT FORCE: INITIAL 8~20N, AFTER 10000 CYCLES 6~20N;
- 2.3.DURABILITY: 8000 CYCLES

4.Plating

- 4.1.Terminal:Contact area:1u" gold plate over 50u" NI min.Solder area:G/F pure TIN plate over 50u" NI min.
- 4.2.Shell ? Ni: 50u"min.

5.Ambient Temperature: -55°C To +85°C

 东莞市溪榜电子有限公司

COPYRIGHT RESERVED,PLEASE DO NOT COPY.

PART NAME		CONNECTOR		DRAWING	Y,C,ZHANG	DWG.No.	SBICL
PART NO.		TYPE-C 6pin 立贴4脚带钩有柱无站脚		CHECK	G.C.Chen	REV.	A1
UNIT :	TOLERANCE	UP TO 5	±0.2	APPROVAL	SCALE	DATE	
	OTHERWISE	ABOVE 5~30	±0.3			PAGE	1 OF 1
mm		ABOVE 30	±0.5				
		ANGLE	±3°				