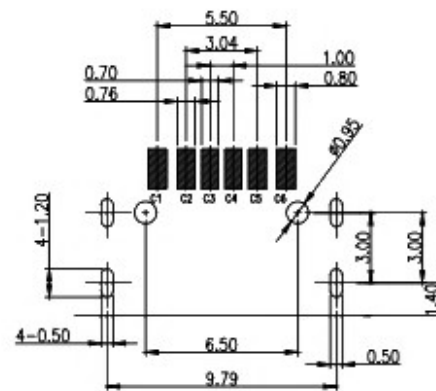


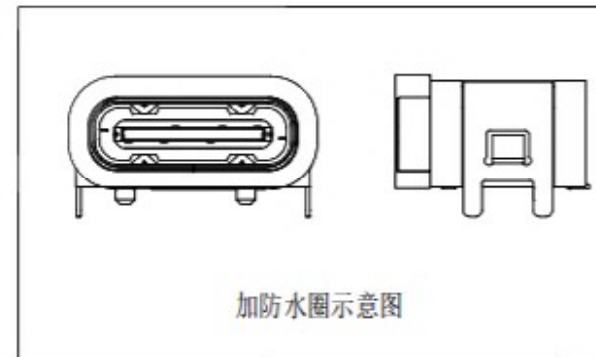
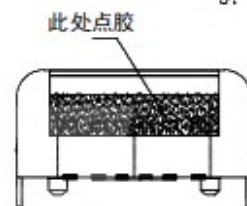
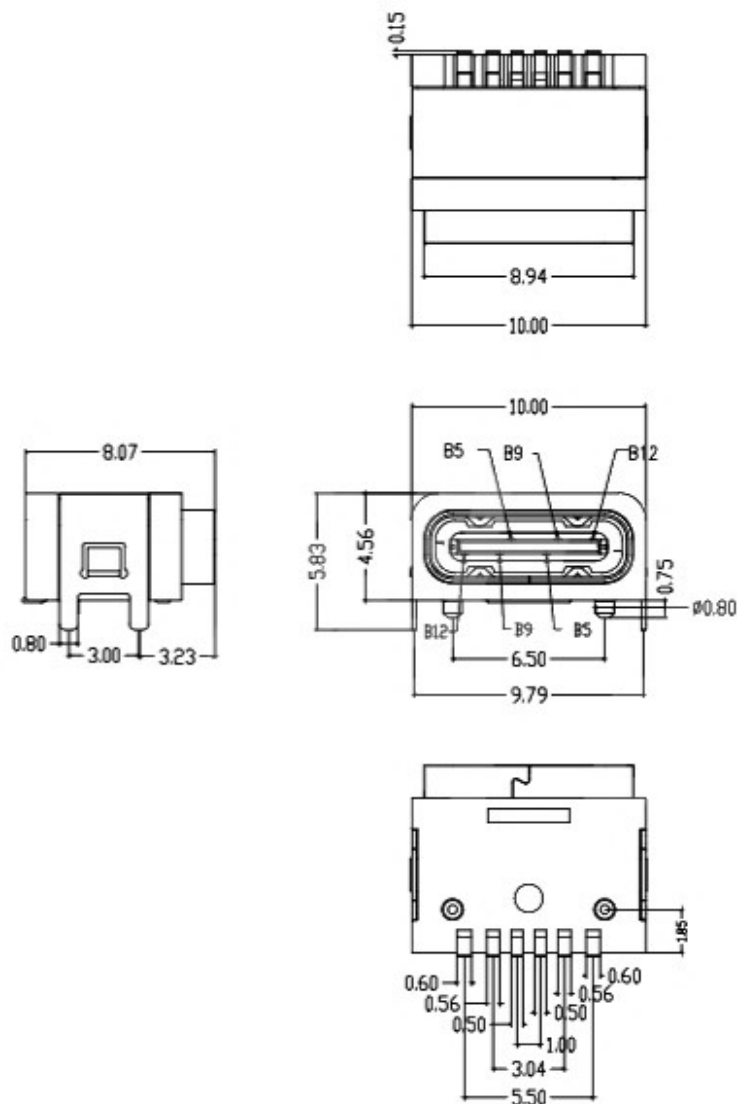
NOTES:

SPECIFICATION:

1. CURRENT RATING: 3.0A MAX
2. VOLTAGE: 100 VAC
3. TEMPERATURE RANGE: -30 °C ~ 85 °C
4. CONTACT RESISTANCE: 40 MILLIONHM MAX
5. INSULATION RESISTANCE: 100 MEGOHMS MIN.
6. INSERTION FORCE : 5N~20N
7. UNMATING FORCE: 8N~20N
8. DURABILITY: 10,000 CYCLES
9. WATER PROOFNESS: THIS PRODUCT IS BASED ON IPX7.



RECOMMENDED P.C.B. LAYOUT
TOLERANCE UNSPECIFIED ±0.05mm



加防水圈示意图

6	防水圈	硅胶	BLACK	1PCS
5	SHELL	STAINLESS STEEL	Ni Plated	1PCS
4	SHIELDING PLATE	STAINLESS STEEL	Ni Plated	1PCS
3	CONTACT	COPPER ALLOY	TiN/Au/Ni Plated	1SET
2	SHELL HOUSING	HIGH TEMPERATURE PLASTIC	BLACK	1PCS
1	HOUSING	HIGH TEMPERATURE PLASTIC	BLACK	1PCS
NO.	DESCRIPTION	MATERIAL	REMARKS	QTY

PART NAME		TYPE-C CONNECTOR		DRAWING		Y.C.ZHANG		DWG.No.		SBICL	
PART NO.		TYPE-C 6pin 贴板带钩防水(点胶款)成品图		CHECK		G.C.Chen		REV.		A1	
UNIT :		TOLERANCE		UP TO 5		ANGLE		APPROVAL		DATE	
mm		OTHERWISE		ABOVE 5~30		0'±3'		SCALE		PAGE	
				±0.2				2:1		1 OF 1	
				±0.3							
				±0.5							
				±3'							