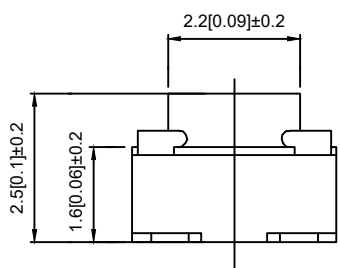
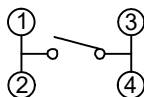


SPECIFICATION

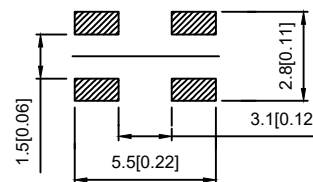
Contact Rating: 50mA, 12V DC
 Contact Resistance: 100mΩ max
 Insulation Resistance: 100mΩ min. 500V DC
 Dielectric Strength: 250V AC/1minute
 Travel: 0.20mm
 Operating Temp: -30°C ~ +85°C
 Storage Temp: -30°C ~ +80°C



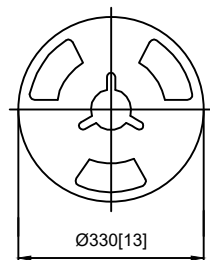
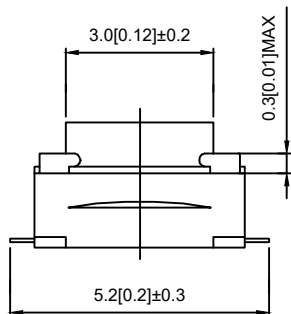
CIRCUIT DIAGRAM



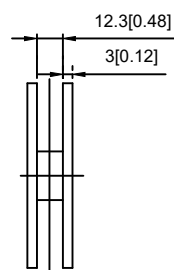
PCB MOUNTING HOLES



PAPT NO	TS-1145A-X-X
Operating Force	A:100gf B:160gf C:260gf
Height	H:2.5
Keystake	A:PA46 B:Silica gel



PACKING PEEL TYPE 4000/1REEL(EA)



ITEM	PAPT NAMF	TER,NO	QTY	MATERIAL	FINISHING	REMARK
⑤	Terminal	—	4	Brass (0.30t)	Plating silvering	—
④	Contact	—	1	F.ag/Sus	Natural	—
③	Base	—	1	LCP		—
②	Cover	—	1	Brass	Plating Nickel	—
①	Keystake	—	1	PA46/Silica gel		—

MARK	DESCRIPTION	DATE	REVISED	APPROVED	UNSPECIFIED TOLERANCES	DSND	DATE	SCALE: N/A	MODEL TYPE: TACT SWITCH
Δx					units: mm	DWN	DATE	VIEW:	PART NO.:
Δx					tolerance: X.X ±0.2mm	CHKD	DATE	UNIT: mm/in	DWG NO.:
Δx					X.XX ±0.1mm	APPD	DATE	SIZE: A4	TS-1145A-X-X
MARK					X.XXX ±0.05mm	DONG GUAN XI BANG ELECTRONIC CO., LTD			WEIGHT 1.0g
REVISIONS									SHEET 1/1
www.alpsr.com www.gdxjdz.com www.xbswitch.com									REVISION A0