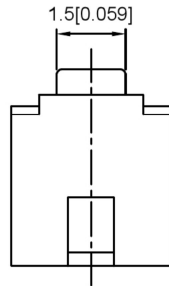
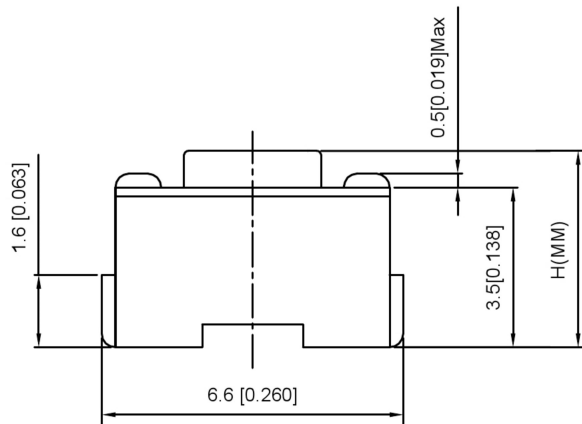


Circuit diagram



SPECIFICATION

Contact Rating: 50mA,12V DC
 Contact Resistance: 100mΩ max
 Insulation Resistance: 100mΩ min.500V DC
 Dielectric Strength: 250V AC/1minute
 Travel: 0.25mm
 Operating Temp: -20°C~+70°C
 Storage Temp: -30°C~+80°C

PAPT NO	TS-1101NH-X-X-X
Operating Force	A:100gf B:160gf C:260gf
Height	H:A:4.3 B:5.0 C:6.0 D:7.0
colour	B:black W:white

ITEM	PAPT NAMF	TER,NO	QTY	MATERIAL	FINISHING	REMARK
⑤	Terminal	—	2	Brass (0.30t)	Plating silvering	—
④	Contact	—	1	F.ag/Sus	Natural	—
③	Base	—	1	Lcp		—
②	Cover	—	1	Spcc	Plating Nickel	—
①	Keystake	—	1	Pa46		—

					units: mm	DSND	DATE	SCALE: N/A	MODEL TYPE: TACT SWITCH
					tolerance:	DWN	DATE	VIEW:	PART NO.:
					X.X ±0.2mm	CHKD	DATE	UNIT: mm/in	DWG NO
					X.XX ±0.1mm	APPD	DATE	SIZE: A4	TS-1101NH-X-X-X
					X.XXX ±0.05mm	DONG GUAN XI BANG ELECTRONIC CO., LTD			WEIGHT
REVISIONS					UNSPECIFIED TOLERANCES				SHEET
www.alpsr.com www.gdxdz.com www.xbswitch.com								1/1	REVISION
								A0	