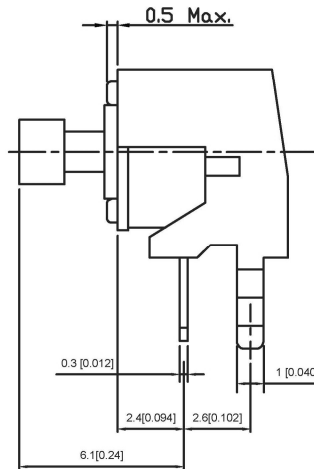
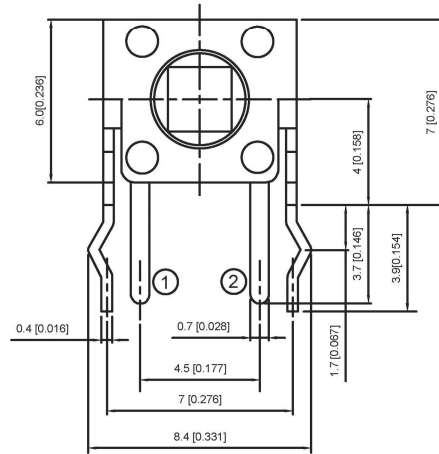
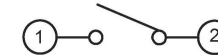


DIMENSIONS



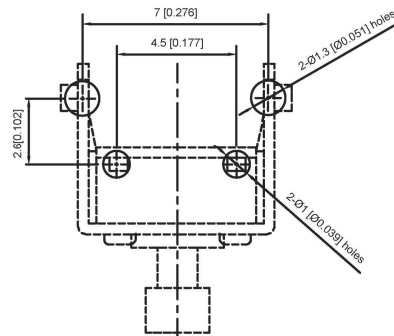
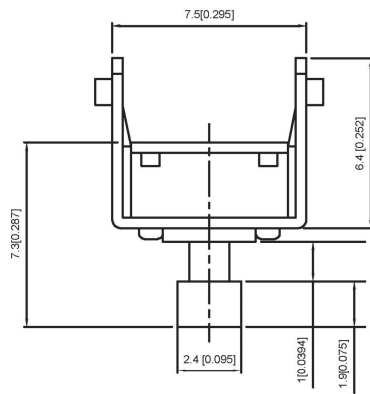
CIRCUIT DIAGRAM



SPECIFICATION

Contact Rating: 50mA, 12V DC  
 Contact Resistance: 100mΩ max  
 Insulation Resistance: 100mΩ min. 500V DC  
 Dielectric Strength: 250V AC/1minute  
 Travel: 0.25mm  
 Operating Temp: -30°C ~ +85°C  
 Storage Temp: -30°C ~ +80°C

P.C.B MOUNTING PATTERN DIMENSION  
 The following soldering patterns are recommended for reflow soldering



PAPT NO	TC-1102NT-X
Operating Force	A:100gf B:160gf C:260gf
Height	H:7.3

ITEM	PAPT NAME	TER.NO	QTY	MATERIAL	FINISHING	REMARK
⑤	Terminal	—	2	Brass (0.30t)	Plating silvering	—
④	Contact	—	1	F.ag/Sus	Natural	—
③	Base	—	1	Pa46	—	—
②	Cover	—	1	Spcc	Plating Nickel	—
①	Keystake	—	1	Pa46	—	—

DSND		DATE		SCALE: N/A	MODEL TYPE: TACT SWITCH
DWN		DATE		VIEW:	PART NO.:
CHKD		DATE		UNIT: mm/in	DWG NO TC-1102NT-X
APPD		DATE		SIZE: A4	WEIGHT 1.0g
				DONG GUAN XI BANG ELECTRONIC CO., LTD	SHEET 1/1
				UNSPECIFIED TOLERANCES	REVISION A0

MARK	DESCRIPTION	DATE	REVISED	APPROVED	units: mm
ΔX					tolerance:
ΔX					X.X ±0.2mm
ΔX					X.XX ±0.1mm
MARK					X.XXX ±0.05mm
REVISIONS					
www.alpsr.com www.gdxdz.com www.xbswitch.com					