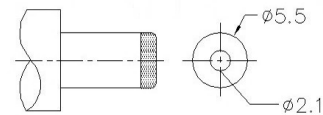
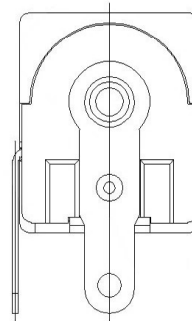
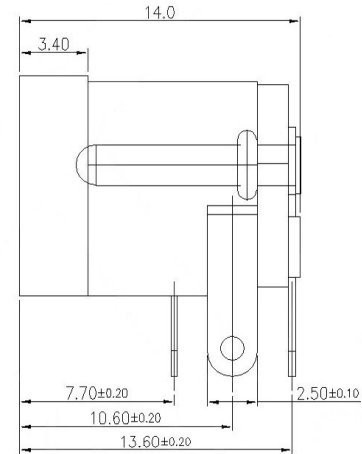
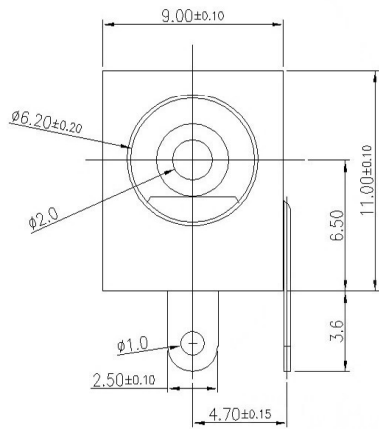


PCB LAYOUT TOP VIEW  
TOLERANCES: ±0.05

- SPECIFICATIONS:
- ELECTRICAL CHARACTERISTICS:
    - RATING:
    - CONTACT RESISTANCE: 30mΩ MAX.(INITIAL)
    - DIELECTRIC WITHSTANDING VOLTAGE: 500V AC FOR ONE MINUTE
    - INSULATION RESISTANCE: 100MΩ MIN. MEASURED BY 500V DC
  - MECHANICAL CHARACTERISTICS:
    - INSERTION FORCE : 0.3~3.0 KGf
    - WITHDRAWAL FORCE : 0.3~3.0 KGf
    - LIFE TEST: 5,000 CYCLES MIN.
    - FOR REFLOW SOLDERING LEAD-FREE PROCESS.
    - REPRESENT CRITICAL DIMENSIONS.



MATING PLUG  
Jack Insertion Depth: 9.0 mm

SCHEMATIC	
Model	DC-005
Center Pin	2.0
	2.5
	3.0

	MATERIAL	PLATING
center pin	Brass	silver
terminal 1	Brass	silver
terminal 2	Phosphor Bronze	silver
terminal 3	Brass	silver
plastic	Pbt	

MARK	DESCRIPTION	DATE	REVISED	APPROVED	UNSPECIFIED TOLERANCES	DSND	DATE	SCALE: N/A	MODEL TYPE: DC POWER JACK		
ΔX					ANGULAR ±5°	DWN	DATE	VIEW:	PART NO.:		
ΔX					X.X ±0.2mm	CHKD	DATE	UNIT: mm	DWG NO.:		
ΔX					X.XX ±0.1mm	APPD	DATE	SIZE: A4	DC-005-5A-2.0		
					X.XXX ±0.05mm				WEIGHT 1.0g	SHEET 1/1	REVISION A0