

NOTES:

1.MATERIAL:

MOLDING: LCP UL94 V-0
 CONTACT: COPPER ALLOY.
 GOLD PLATED Min ON CONTACT AREA, 100u"
 Min TIN (LEAD FREE) ON SOLDER AREA,
 SHELL: SUS304-H, T=0.30±0.03mm
 50u" NICKEL PLATING OVER ALL.

2.MECHANICAL:

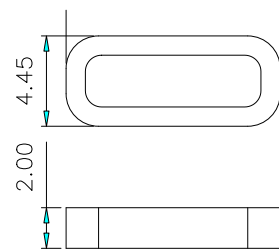
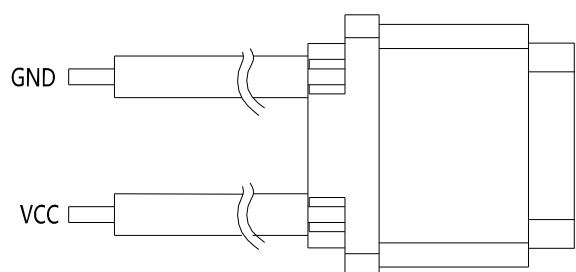
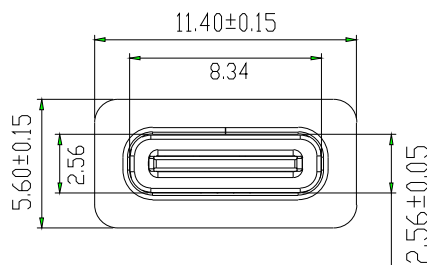
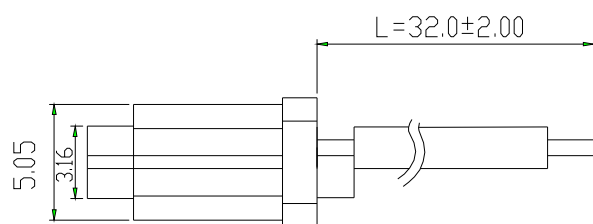
INSERTION: 5~20N.
 EXTRACTION: 8~20N AFTER TEST.
 DURABILITY: 10000 CYCLES

3.ELECTRICAL:

CURRENT: 3A FOR VBUS;
 1.25A FOR GND PIN.
 0.25A FOR OTHER.
 VOLTAGE: 20 V MAX
 WITHSTANDING VOLTAGE: 100V AC R.M.S.
 CONTACT RESISTANCE: 40mΩ MAX.
 INSULATION RESISTANCE: 100MΩ MIN.

4.ENVIRONMENTAL

TEMPERATURE RANGE -25°C ~ +85°C



防水圈图

东莞市溪榜电子有限公司 DONG GUAN XIBANG ELECTRONICS CO., LTD.			
TOLERANCE: X.X ±0.30 X.XX ±0.20 X.XXX ±0.10 X.° ±10° .X.° ±5° .X.° ±5°	DRAWN BY :	DATE :	PART NAME: TYPE-C2P防水焊线 式带外露焊盘H10.0
		2015.08.18	
	CHECKED BY :	DATE :	PART NO. SEE TABLE
		2015.08.18	MOLD NO.
	APPROVED BY :	DATE :	DRAW NO.
		2015.08.18	SHEET NO. 1 OF 1
UNIT: mm [inch]	SCALE: 1:1	SIZE: A4	