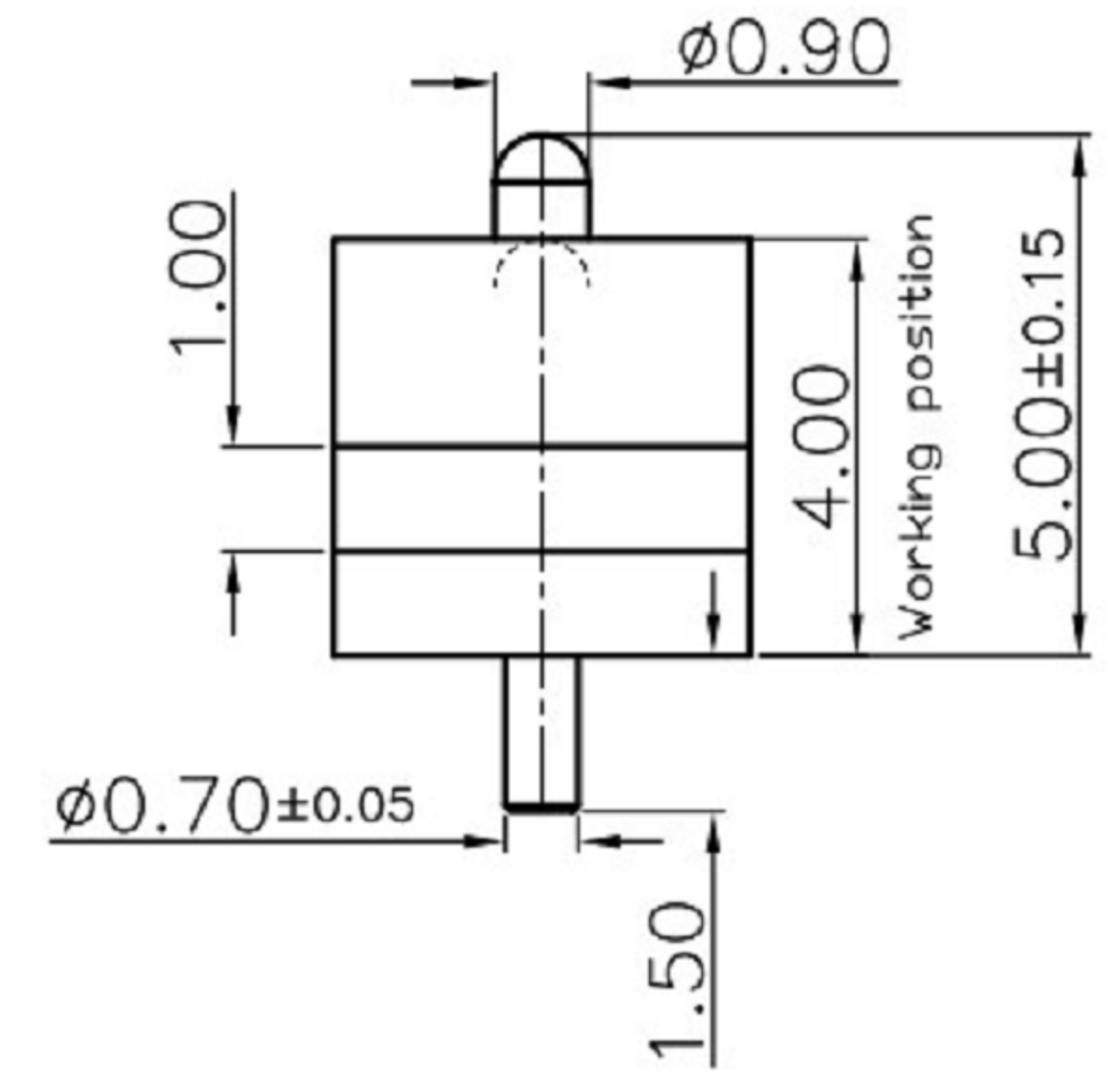
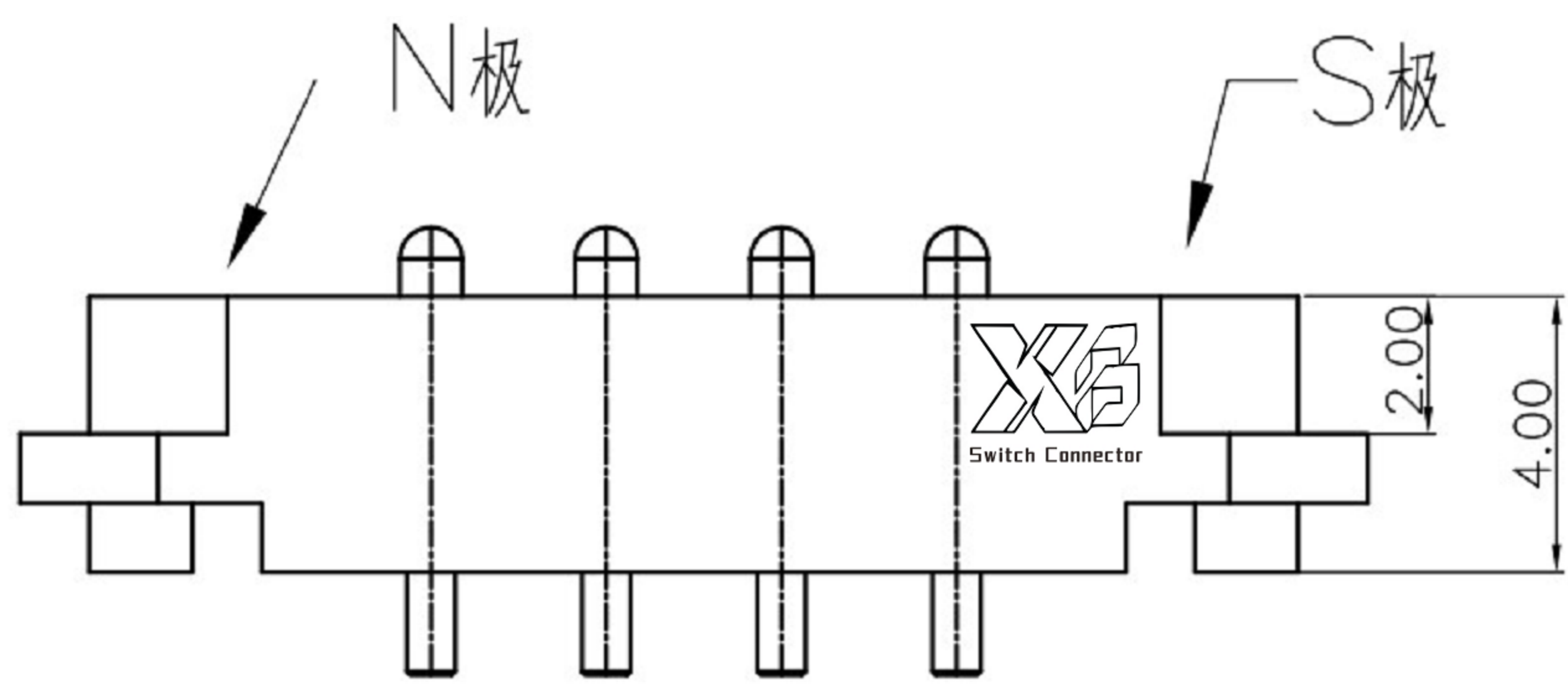


Recommended layout
General tolerance: $\pm 0.05\text{mm}$



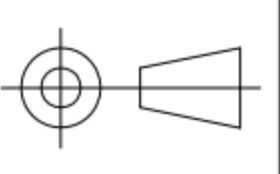
NOTE

1. Material
 Plunger: Brass
 Barrel: Brass
 Spring: SUS
 Housing: PA46
2. Plating
 Plunger: Au over NI
 Barrel: Au over NI
3. Electrical
 Rated current & voltage: DC 12V; 2.0A Max.
4. Mechanical
 Spring force: $60\text{g} \pm 20\%$ at normal working height
 Durability: 10,000 cycles (minimum)
5. To ensure the best usage, please operate it based on the working height. Based on the engineering drawings, shall not exceed the maximum allowed compression.
6. To avoid arcing issue, The adaptor start to power supply after connector mated fully.

XB 东莞市溪榜电子有限公司
 DONG GUAN XI BANG ELECTRONICS CO., LTD.

TOLERANCE UNLESS OTHERWISE STATED:
 Up to 5 ± 0.2
 Above 5 ~ 15 ± 0.3
 Above 15 ~ 30 ± 0.4
 Above 30 ~ 50 ± 0.5
 Angle $\pm 0.3^\circ$

3RD. ANGEL'S



UNITS

MM

DRAWN BY:	DATE
Jack Lu	04/01/21
CHECKED BY:	DATE
Jacky Chen	04/01/21
APPROVED BY:	DATE
Tony Kao	04/01/21

MAT'L	TITLE	CONNECTOR
FINISH	MODLE	POGO PIN
SCALE 1:1	DWG NO.	XB-PGC-CT-401G
SHEET NO. 1 of 1	PART NO.	Magnetic PoGo Pin

SIZE	A4
VER	R

ITEM NO.	DESCRIPTION	DRAWN	DATE