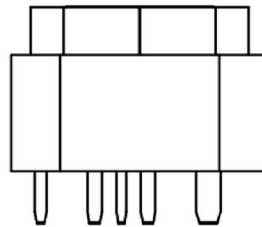
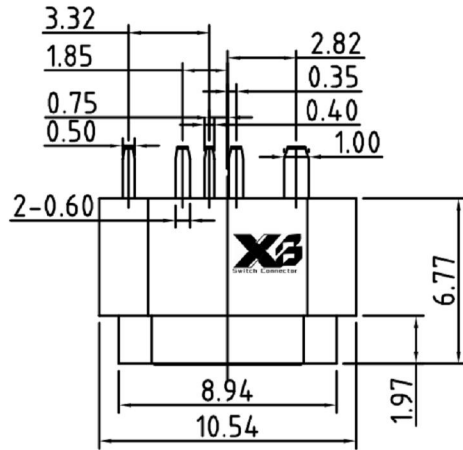
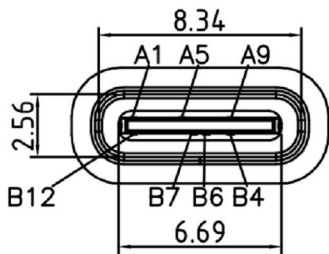
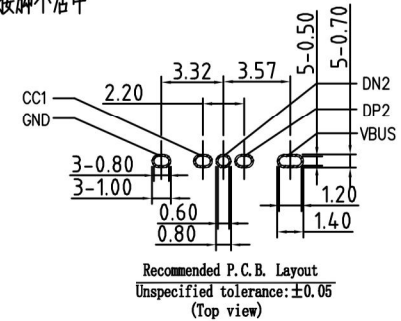


ROHS

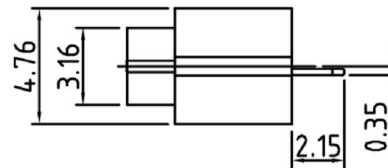
REV.	ECN. NO.	APPD.



注意，此座子焊接脚不居中



注意，此座子焊接脚不居中



RECOMMENDED PCB LAYOUT(TOP VIEW)

THICKNESS T=1.0mm
DEFAULT TOLERANCE+/-0.05

NOTES:

SPECIFICATION:

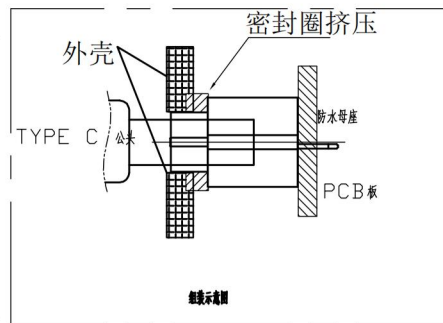
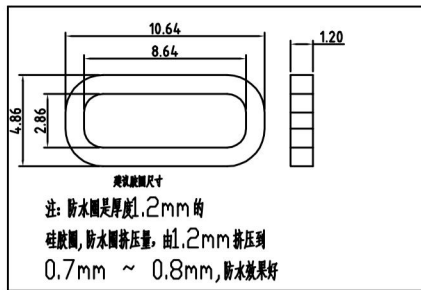
- CURRENT RATING: 3.0A MAX
- DIELECTRIC WITHSTAND VOLTAGE: 100VAC
- TEMPERATURE RANGE: -30 °C ~ 85 °C
- CONTACT RESISTANCE: 40 MILLIONHM MAX
- INSULATION RESISTANCE: 100 MEGOHMS MIN.
- INSERTION FORCE : 5N~20N
- UNMATING FORCE: 8N~20N
- DURABILITY:5000 CYCLES

INTERFACE(FRONT VIEW)

A1	A2	A3	A4	A5	A6	A7	A8	A9	A10	A11	A12
GND				CC1				DN2		DP2	
GND										VBUS	
B12	B11	B10	B9	B8	B7	B6	B5	B4	B3	B2	B1

PIN ASSIGNMENT

PIN NO.	A1&B12	A5	B7	B6	A9&B4
SINGAL NAME	GND	CC1	DN2	DP2	VBUS
PCB PAD NO.	C1	C2	C3	C4	C5



5	Shell2	1	SUS304 Ni Plating T=0.20mm	Ni40~120u ² ;
4	Shell1	1	SUS304 Ni Plating T=0.3mm	Ni40~120u ² ;
3	Housing2	1	LCP(G.F30%)	
2	Contact	4	Phosphor bronze_C5191R-H Au/Ni Plating T=0.25mm	Ni40~160u ² ; AuCONTACT AREA:3u ² ;
1	Housing	1	PA9T (G.F30%)	
ITEM	PARTNAME	Q'TY	FINISH	NOTE

X.	±0.50	X.*	± 2°	UNITS	mm
.X	±0.30	.X.*	± 1°		
.XX	±0.10	.XX.*	± 0.5°	MAT'L	
.XXX	± 0.05			FINISH	
				Q'TY	

XB 东莞市溪榜电子有限公司
Switch Connector DONG GUAN XI BANG ELECTRONICS CO., LTD

PART NO.	XB-USB-C-5P-1148-IPX7	TITLE:	TYPE C 7Pin(带5PIN) 或 TYPE-C 特精
APPD:	GAO. PENG	DWG NO.:	XB-USB-C-5P-1148-IPX7
CHKD:	HE. LONG. FEI		
DR:	PANG. DONG		
		SCALE	SHEET
		1/1	1/2
		REV.	A1