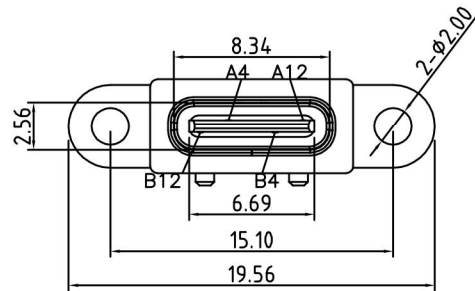
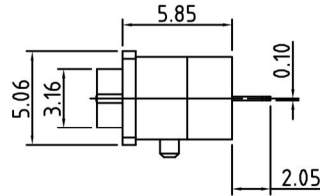
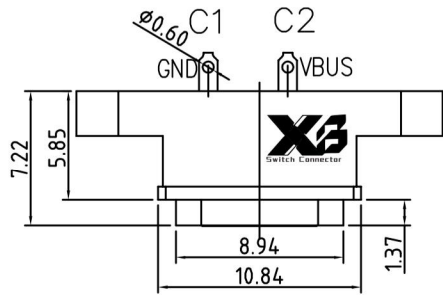


ROHS

REV.	ECN. NO.	APPD.

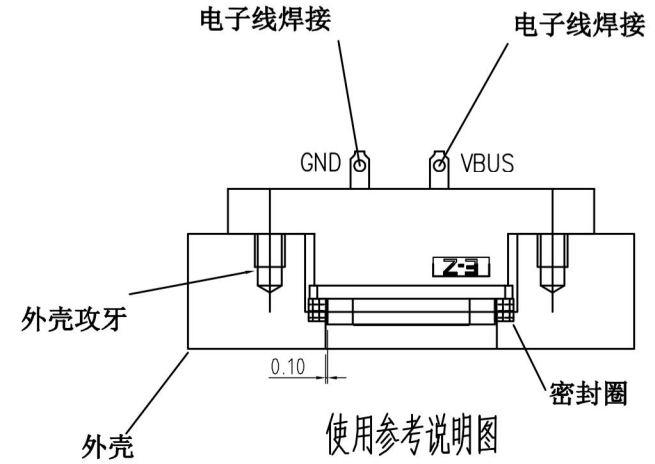


INTERFACE(FRONT VIEW)

A1	A2	A3	A4	A5	A6	A7	A8	A9	A10	A11	A12
/	/	/	VBUS	/	/	/	/	/	/	/	GND
GND	/	/	/	/	/	/	/	VBUS	/	/	/
B12	B11	B10	B9	B8	B7	B6	B5	B4	B3	B2	B1

PIN ASSIGNMENT

PIN NO.	A12&B12	A4&B4
SINGAL NAME	GND	VBUS
PCB PAD NO.	C1	C2



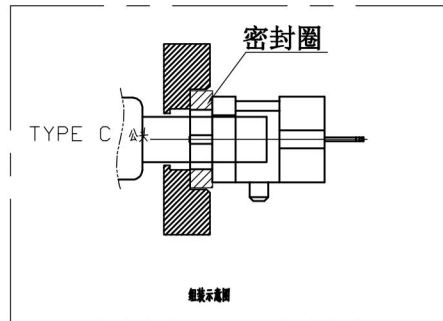
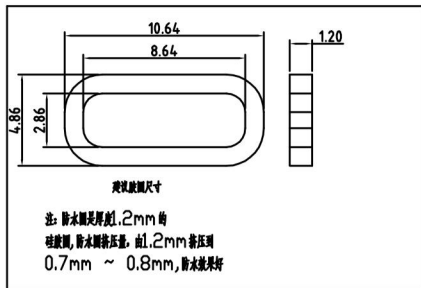
无需PCB板, 可直接焊线



NOTES:

SPECIFICATION:

- CURRENT RATING: 3.0A MAX
- DIELECTRIC WITHSTAND VOLTAGE: 100VAC
- TEMPERATURE RANGE: -30 °C ~ 85 °C
- CONTACT RESISTANCE: 40 MILLIONHM MAX
- INSULATION RESISTANCE: 100 MEGOHMS MIN.
- INSERTION FORCE : 5N~20N
- UNMATING FORCE: 8N~20N
- DURABILITY:5000 CYCLES



5	Shell2	1	SUS304 Ni Plating T=0.20mm	Ni40~120u ²
4	Shell1	1	SUS304 Ni Plating T=0.3mm	Ni40~120u ²
3	Housing2	1	LCP(G.F30%)	
2	Contact	4	Phosphor bronze_C5210R-EH Au/Ni Plating T=0.20mm	Ni40~160u ² Au CONTACT AREA:3u ² OTHER AREA:G/F
1	Housing	1	PA9T (G.F30%)	
ITEM	PARTNAME	Q'TY	FINISH	NOTE

X.	±0.50	X.*	± 2°	UNITS	mm
.X	±0.30	.X.*	± 1°	MAT'L	/
.XX	±0.10	.XX.*	± 0.5°	FINISH	/
.XXX	± 0.05			Q'TY	/

XB 东莞市溪榜电子有限公司
Switch Connector DONG GUAN XI BANG ELECTRONICS CO., LTD

PART NO.	XB-USB-C-2P-1127-IPX7	TITLE:	2PIN 电子线连接器 TYPE C
APPD:		DWG NO.:	XB-USB-C-2P-1127-IPX7
CHKD:		SCALE	SHEET
MARK		1/1	1/2
DR:		REV.	A1

THESE DRAWINGS AND SPECIFICATIONS ARE THE PROPERTY OF XI BANG ELECTRONIC TECHNOLOGY CO., LTD. AND SHALL NOT BE REPRODUCED, COPIED OR USED IN ANY MANNER WITHOUT THE PRIOR WRITTEN CONSENT OF XI BANG ELECTRONIC TECHNOLOGY CO., LTD.