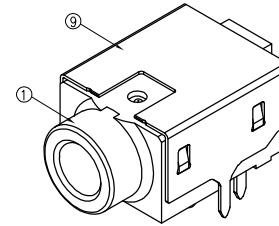


DATE CODE:

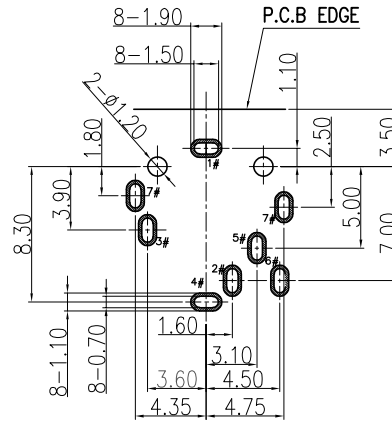
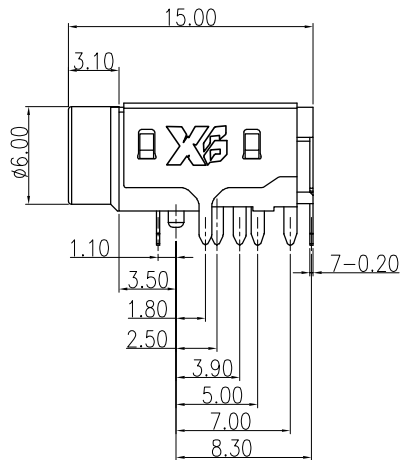
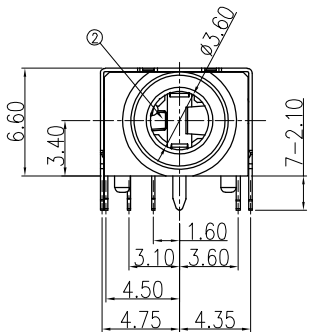
YY WW

WEEK

YEAR



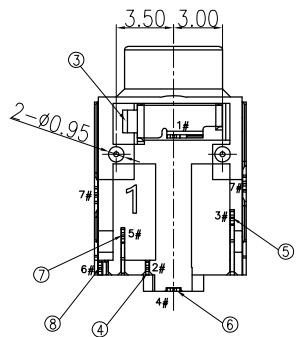
3D VIEW



PCB HOLES(TOP VIEW)  
GENERAL TOLERANCE:±0.05mm

NOTES:

1. MATERIAL: SEE "TABLE 1";
2. FINISH: SEE "TABLE 1";
3. ELECTRICAL:
  - 3.1. VOLTAGE RATING: DC 30V
  - 3.2. CURRENT RATING: 1A
  - 3.3. CONTACT RESISTANCE: 30mΩ Max.(Initial), 50mΩ Max.(After Life test);
  - 3.4. INSULATION RESISTANCE: 1000 MΩ Min., 500VDC.(Initial), 100 MΩ Min., 500VDC.(After Humidity test);
  - 3.5. WITHSTAND VOLTAGE: 500 VAC RMS 50(60)Hz, 1 minute;
4. MECHANICAL:
  - 4.1. MATING FORCE: 3.0Kgf MAX.;
  - 4.2. UNMATING FORCE: 0.3Kgf MIN.;
  - 4.3. OPERATING LIFE: 5000 CYCLES MIN.;
5. ENVIRONMENTAL:
  - 5.1. OPERATION: -30°C~+80°C.



PLUG SPEC	SCHEMATIC	AFTER INSERT SCHEMATIC

TABLE 1:

NO.	PART NAME	QTY	MATERIAL	DESCRIPTION	REMARK
⑨	Shell	1	Stainless steel	Ni 50u" Min	T=0.20mm
⑧	Contact_6	6#	Copper Alloy	CONTACT AREA:5u" SOLDER AREA:G/F 50u" OVER ALL	T=0.20mm
⑦	Contact_5	5#	Copper Alloy		T=0.20mm
⑥	Contact_4	4#	Copper Alloy		T=0.20mm
⑤	Contact_3	3#	Copper Alloy		T=0.20mm
④	Contact_2	2#	Copper Alloy		T=0.20mm
③	Contact_1	1#	Copper Alloy		T=0.20mm
②	Separator	1	HIGH TEMP	BLACK,UL94V-0	
①	Housing	1	HIGH TEMP	BLACK,UL94V-0	

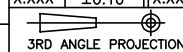
UNLESS OTHERWISE SPECIFIED TOLERANCES

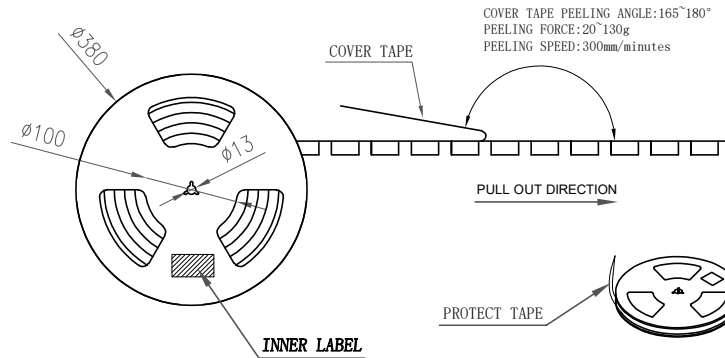
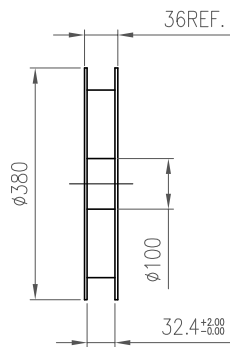
DECIMALS:		ANGLES:	
DIM	TOL	DIM	TOL
X.	±0.50	X.	±2'
X.X	±0.30	X.X	±1'
X.XX	±0.20	X.XX	±1'
X.XXX	±0.10	X.XXX	±1'

**东莞市溪榜电子有限公司**  
DONG GUAN XI BANG ELECTRONICS CO., LTD.

DESIGN: Gao. Peng 2021.2.24	PART NAME: Φ3.5 PHONE JACK
CHECK:	PART NO. XB-PJ-03506-1291-00000H
APPROVED: He. Long. Fei 2021.2.24	SHEET: 1/2 REV.: A1
UNIT: mm	DRAWING NO

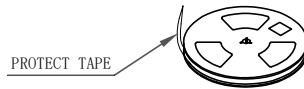
REV.	ECN NO.	DESCRIPTION	DESIGN	DATE



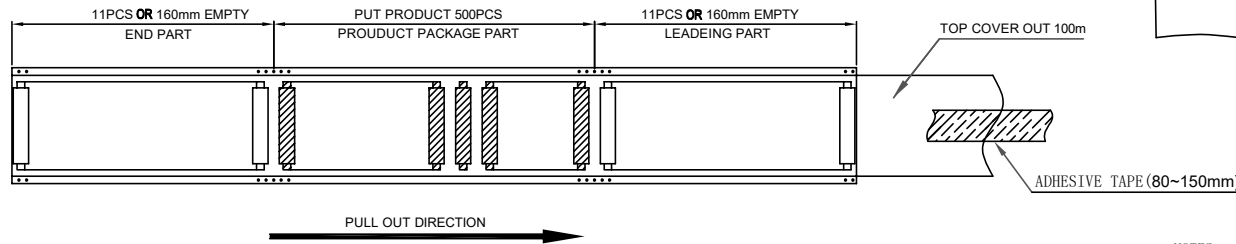
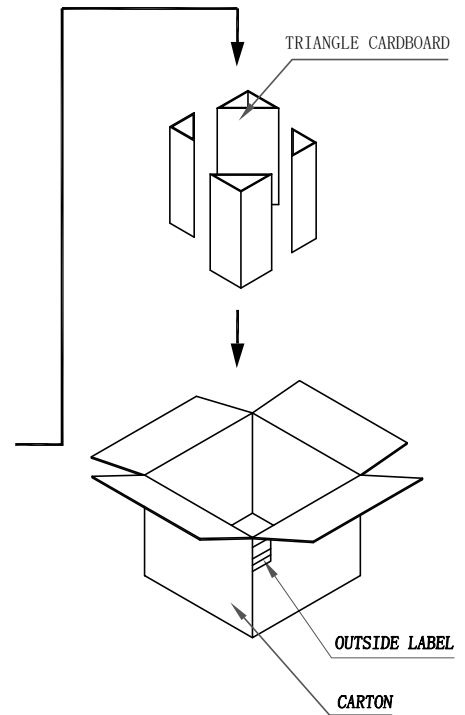
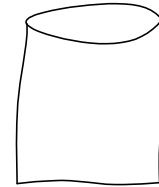
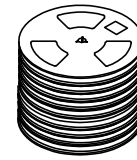


COVER TAPE PEELING ANGLE:165°~180°  
PEELING FORCE:20~130g  
PEELING SPEED:300mm/minutes

PULL OUT DIRECTION



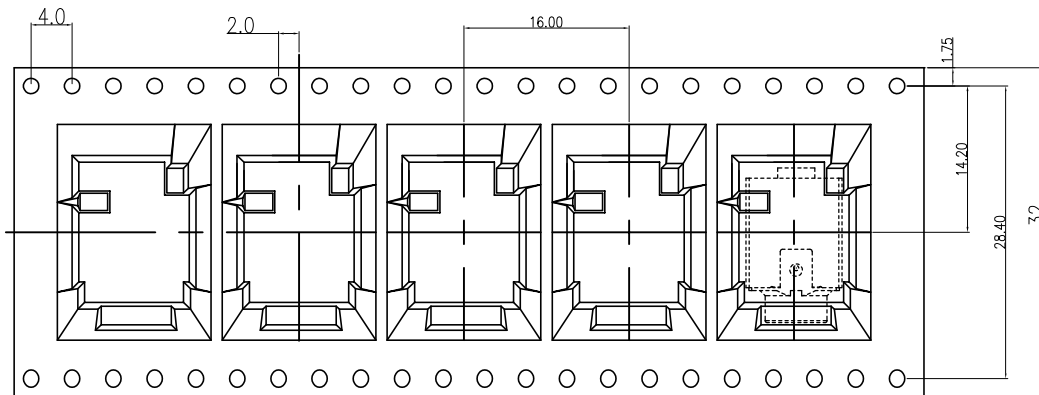
TOTAL 10 DISK



PULL OUT DIRECTION

NOTES:

- Material requirements:
  - The carton material requirements for the K=A, Dimension is 400\*400\*400mm;
  - Reel materials for PS; size reel for 380\*36.
- Packaging requirements:
  - The tape into the packing machine, before the empty 16PCS, after the release of the product 500PCS, then the empty 16PCS with 300MM length of stay;
  - Top cover should out 100mm of the carrier tape. After winding, using adhesive tape (80-150mm) to stick the leader of cover tap on the side of the carrier tape;
  - Winding a protect tape around the reel, then stick it by adhesive tape;
  - Label should paste in the designated area of the reel;
  - The tired folded 10 disks in the carton total 5000PCS;
  - Packed finished packing sealing, and in the outer carton label



UNLESS OTHERWISE SPECIFIED TOLERANCES

**XB 东莞市溪榜电子有限公司**  
DONG GUAN XI BANG ELECTRONICS CO., LTD.

DECIMALS:		ANGLES:		DESIGN:	Gao. Peng 2021.2.24	PART NAME: Φ3.5 PHONE JACK
DIM	TOL	DIM	TOL	CHECK:	APPROVED	PART NO. XB-PJ-03506-1291-00000H SHEET: 2/2   REV.: A1 DRAWING NO
X.	±0.50	X.	±2'			
X.X	±0.30	X.X	±1'			
X.XX	±0.20	X.XX	—			
X.XXX	±0.10	X.XXX	—	UNIT: mm	He. Long. Fei 2021.2.24	

REV.	ECN NO.	DESCRIPTION	DESIGN	DATE
------	---------	-------------	--------	------

8

7

6

5

4

3

2

1