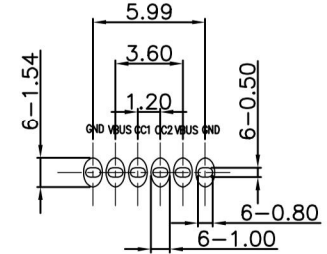
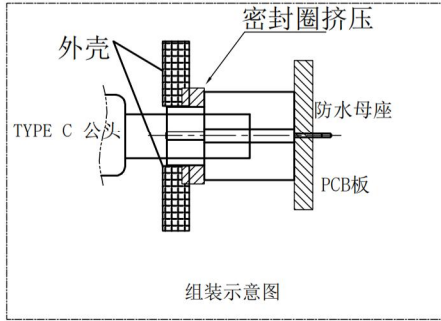
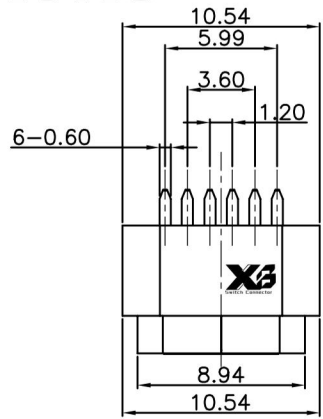


# ROHS

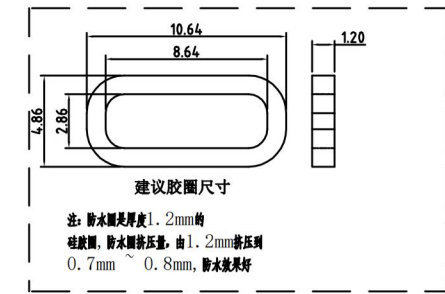
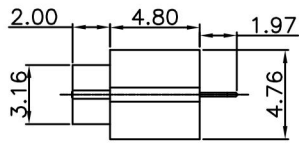
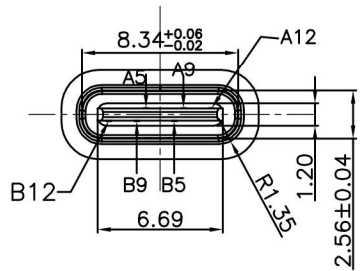
REV.	ECN. NO.	APPD.



Recommended P.C.B. Layout  
Unspecified tolerance:  $\pm 0.05$   
(Top view)

### RECOMMENDED PCB LAYOUT(TOP VIEW)

THICKNESS T=1.0mm  
DEFAULT TOLERANCE  $\pm 0.05$



### NOTES:

#### SPECIFICATION:

1. CURRENT RATING: 3.0A MAX
2. DIELECTRIC WITHSTAND VOLTAGE: 100VAC
3. TEMPERATURE RANGE:  $-30^{\circ}\text{C} \sim 85^{\circ}\text{C}$
4. CONTACT RESISTANCE: 40 MILLIONHM MAX
5. INSULATION RESISTANCE: 100 MEGOHMS MIN.
6. INSERTION FORCE : 5N~20N
7. UNMATING FORCE: 8N~20N
8. DURABILITY:5000 CYCLES



A5	CC1	B12	GND
A9	VBUS	B9	VBUS
A12	GND	B5	CC2
PIN	SIGNAL NAME	PIN	SIGNAL NAME

4	Shell1	1	SUS304 Ni Plating T=0.25mm	Ni:40~120u";
3	Housing2	1	LCP(G.F30%)	
2	Contact	5	Phosphor bronze C5210R-EH Au/Ni Plating T=0.20mm	Ni:40~160u"; Au:CONTACT AREA:3u", OTHER AREA:G/F
1	Housing	1	PA9T (G.F30%)	
ITEM	PART NAME	Q' TY	FINISH	NOTE

X.	$\pm 0.50$	X.°	$\pm 2^{\circ}$	UNITS	mm
.X	$\pm 0.30$	.X°	$\pm 1^{\circ}$		
.XX	$\pm 0.10$	.XX°	$\pm 0.5^{\circ}$	MAT'L	/
.XXX	$\pm 0.05$			FINISH	/
				Q' TY	/

<b>东莞市溪榜电子有限公司</b> DONG GUAN XI BANG ELECTRONICS CO., LTD		<b>PART NO.</b> XB-USB-C-6P-1128-H6. 8-N1-IPX7			<b>TITLE:</b> IP68防水TYPE C 6Pin 连接器		
<b>APPD:</b> GAO. PENG		<b>DRG NO.:</b> XB-USB-C-6P-1128-H6. 8-N1-IPX7					
<b>CHKD:</b> HE. LONG. FEI		<b>SCALE</b> 1/1			<b>SHEET</b> 1/2		
<b>DR:</b> PANG. DONG		<b>REV.</b> A1					