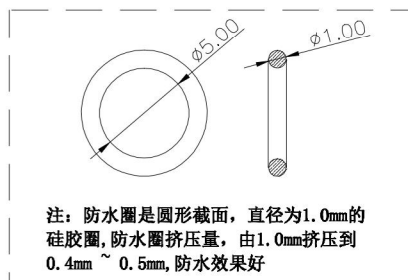
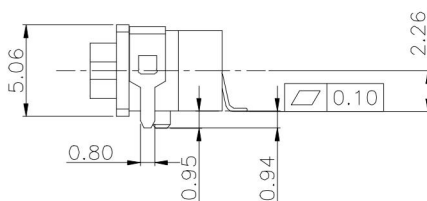
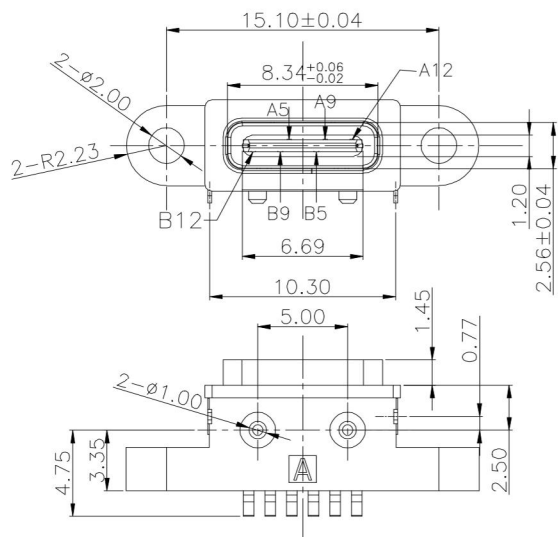
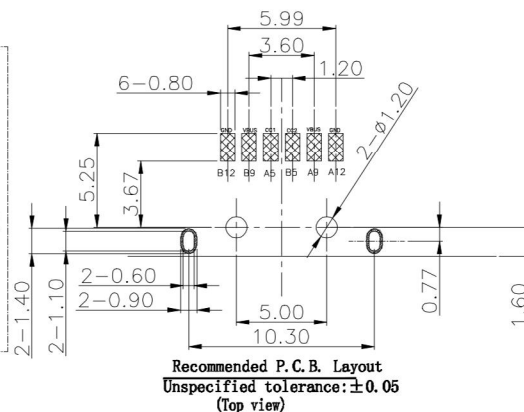
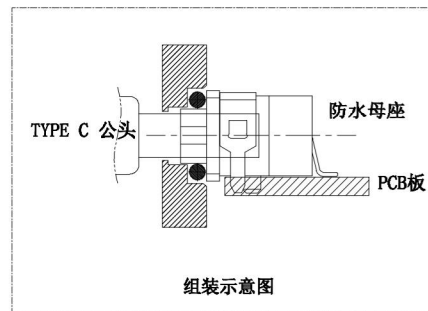
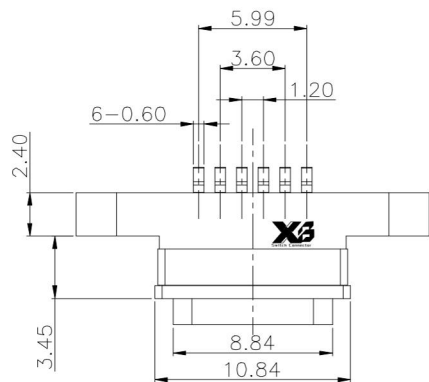


ROHS

REV.	ECN. NO.	APPD.



NOTES:

SPECIFICATION:

- CURRENT RATING: 3.0A MAX
- DIELECTRIC WITHSTAND VOLTAGE: 100VAC
- TEMPERATURE RANGE: -30 °C ~ 85 °C
- CONTACT RESISTANCE: 40 MILLIONHM MAX
- INSULATION RESISTANCE: 100 MEGOHMS MIN.
- INSERTION FORCE : 5N~20N
- UNMATING FORCE: 8N~20N
- DURABILITY:5,000 CYCLES

A5	CC1	B12	GND
A9	VBUS	B9	VBUS
A12	GND	B5	CC2
PIN	SIGNAL NAME	PIN	SIGNAL NAME

5	Shell2	1	SUS301 Ni Plating T=0.20mm	Ni:40~120u";
4	Shell1	1	SUS301 Ni Plating T=0.25mm	Ni:40~120u";
3	Housing2	1	LCP(G.F30%)	
2	Contact	5	Phosphor bronze C5210R-EH Au/Ni Plating T=0.20mm	Ni:40~160u"; Au:CONTACT AREA:3u"; OTHER AREA:G/F
1	Housing	1	PA9T (G.F30%)	
ITEM	PART NAME	Q' TY	FINISH	NOTE

X.	± 0.50	X.°	± 2°	UNITS mm
.X	± 0.30	.X°	± 1°	
.XX	± 0.10	.XX°	± 0.5°	MAT' L
.XXX	± 0.05			
				FINISH
				Q' TY

XIB 东莞市溪榜电子有限公司
Switch Connector DONG GUAN XI BANG ELECTRONICS CO., LTD

PART NO. XB-USB-C-6P-1103U-IPX7
TITLE: TYPE C 6Pin SMT Type

APPD: GAO. PENG
CHKD: HE. LONG. FEI
DWG NO.: XB-USB-C-6P-1103U-IPX7

DR: PANG. DONG		SCALE	SHEET	REV.
		1/1	1/2	A1