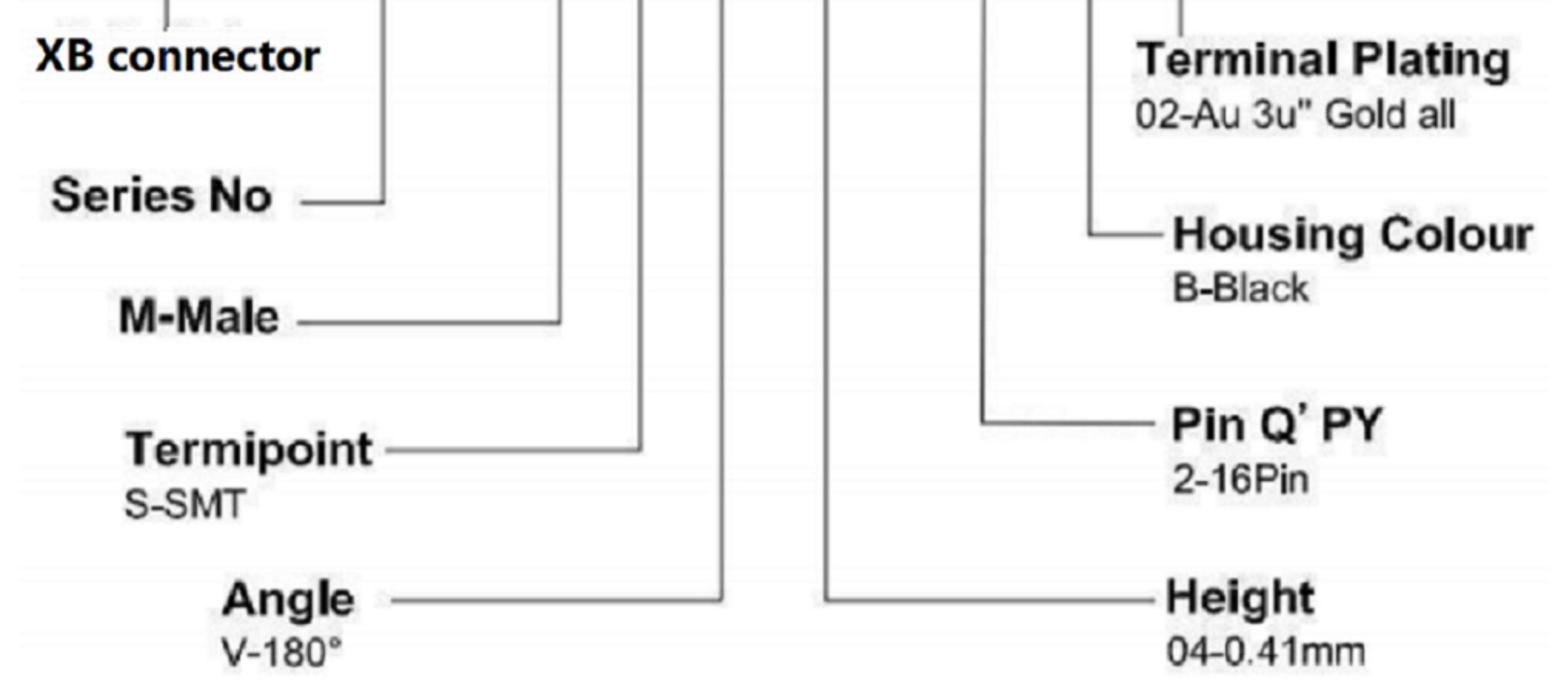
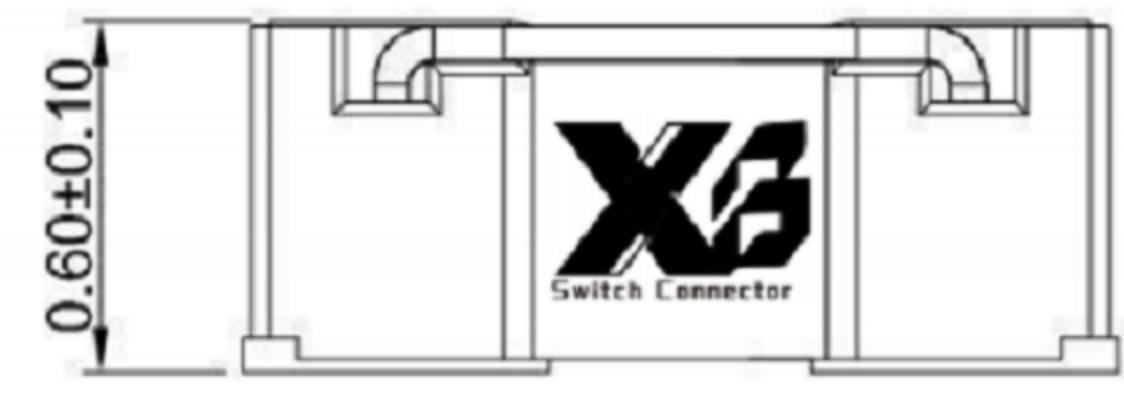
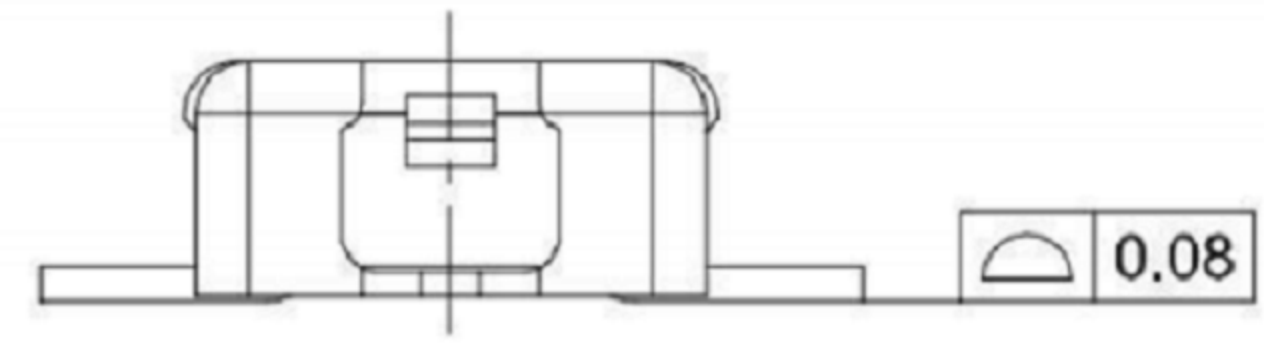
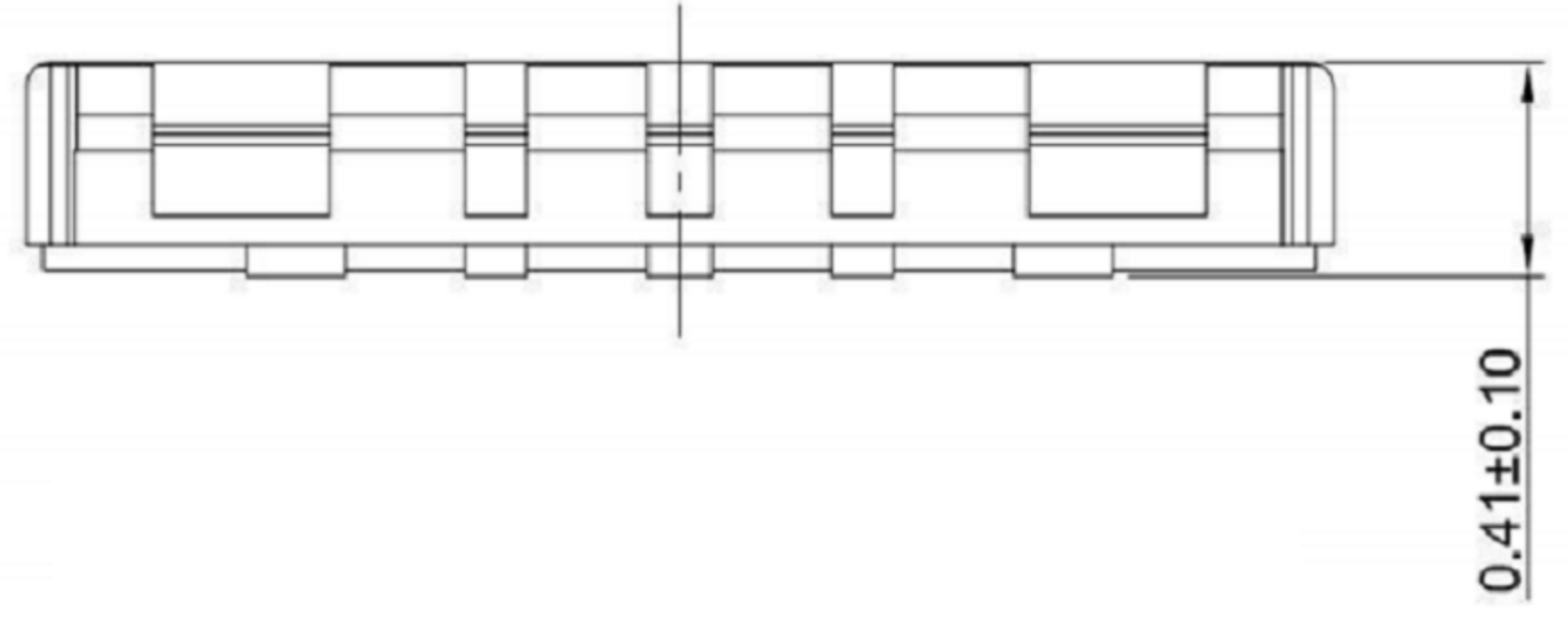


**XB- 0353 M S V 04 -XX X XX 01**

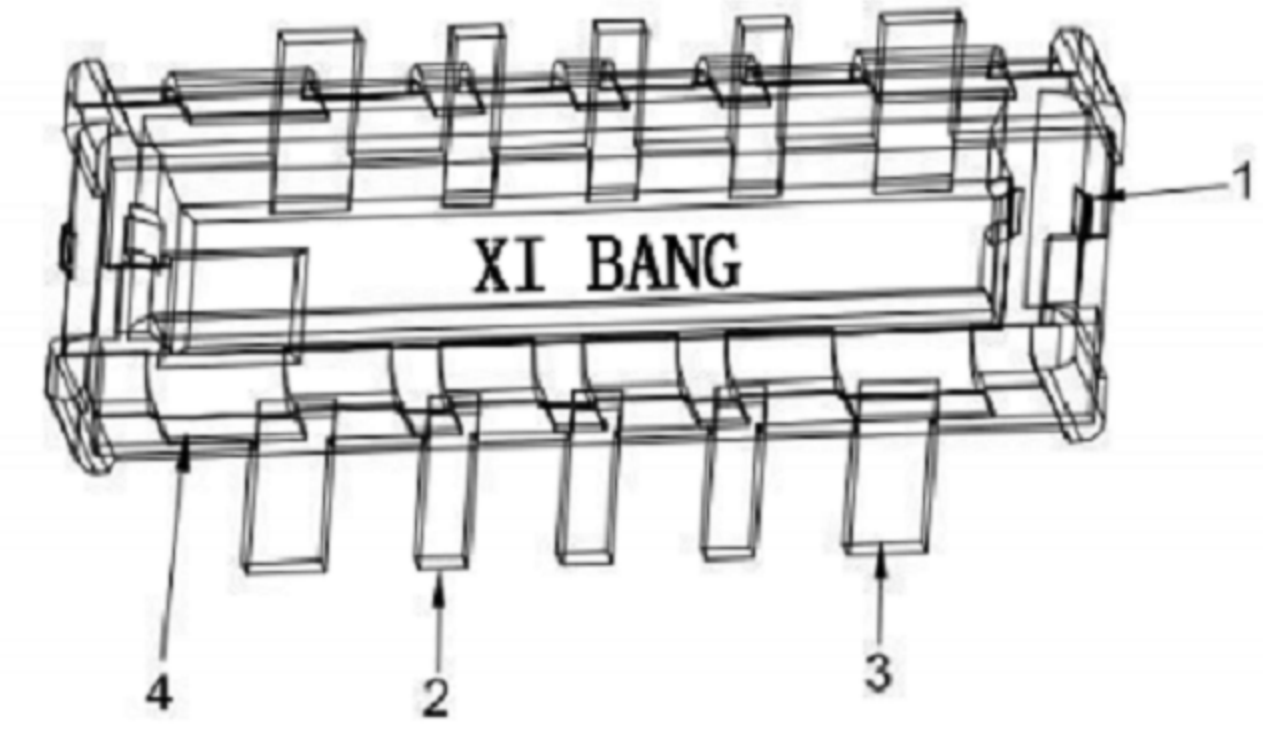


**XB connector Specification:**

1. Current rated: 0.3A AC/DC
2. Voltage rating: 30V AC/DC
3. Withstanding voltage: 250V AC for 1 min
4. Contact resistance: 70mΩ max. Signal pin  
Contact resistance: 20mΩ Max. Power pin
5. Insulation resistance: 100MΩ min
6. Durability cycle: 30 Cycles
7. Removal force: 0.015kgf/Pin min
8. Operating temperature range: -40°C ~ +85°C



**MATING HEIGHT**



**Ordering Information:**

Circuit	Dimensions(mm)			Circuit	Dimensions(mm)		
	A	B	C		A	B	C
02	1.81	0.77	---	10	3.21	2.17	1.40
04	2.16	1.12	0.35	12	3.56	2.52	1.75
06	2.51	1.47	0.70	14	3.91	2.87	2.10
08	2.86	1.82	1.05	16	4.26	3.22	2.45

**XB** 东莞市溪榜电子有限公司  
DONG GUAN XI BANG ELECTRONICS CO., LTD.

TOLERANCE UNLESS OTHERWISE STATED: Up to 5 ±0.2, Above 5 ~ 15 ±0.3, Above 15 ~ 30 ±0.4, Above 30 ~ 50 ±0.5, Angle ±0.3°

3RD. ANGEL'S UNITS MM

DRAWN BY:	DATE	MAT'L	TITLE	CONNECTOR
Jack Lu	03/10/22		MODLE	BTB 0.35mm Pitch 180° H0.40mm SMT Type Male Connector
CHECKED BY:	DATE	FINISH	DWG NO.	XB-0353MSV04
Jacky Chen	03/10/22		PART NO.	
APPROVED BY:	DATE	SCALE	SHEET NO.	1 of 1
Tony Kao	03/10/22	1 : 1		

1	更新圖面	Jack	031022
ITEM NO.	DESCRIPTION	DRAWN	DATE