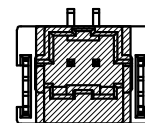
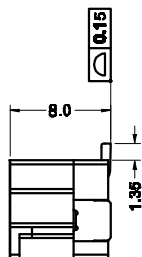
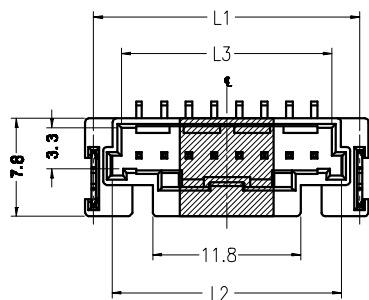
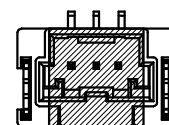


- Specifications:
- Voltage rating: 125V AC / DC
 - Current rating: 3A AC / DC
 - Withstanding voltage: 500V AC/minute
 - Temperature range: -40°C~+105°C
 - Insulation resistance: ≥1000MΩ
 - Contact resistance: ≤10mΩ
 - After environmental testing: ≤20mΩ

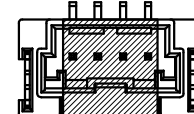
Material:
 • Insulator material: PA9T UL94V-0
 • Contact material: Brass



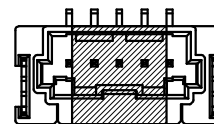
2pin



3pin

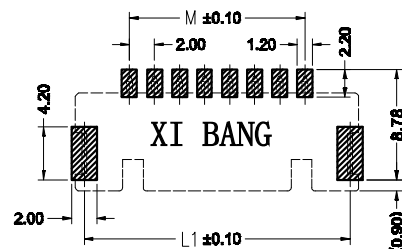
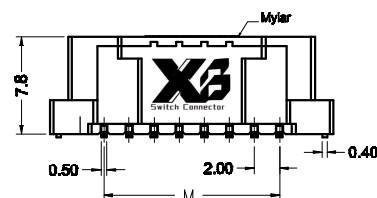


4pin



5pin

Poles	Dimensions (mm)				
	L	L1	L2	L3	M
02	10.60	9.23	6.30	4.80	2.00
03	12.60	11.23	8.30	6.80	4.00
04	14.60	13.23	10.30	8.80	6.00
05	16.60	15.23	12.30	10.80	8.00
06	18.60	17.23	14.30	12.80	10.00
07	20.60	19.23	16.30	14.80	12.00
08	22.60	21.23	18.30	16.80	14.00
09	24.60	23.23	20.30	18.80	16.00
10	26.60	25.23	22.30	20.80	18.00
11	28.60	27.23	24.30	22.80	20.00
12	30.60	29.23	26.30	24.80	22.00
13	32.60	31.23	28.30	26.80	24.00
14	34.60	33.23	30.30	28.80	26.00
15	36.60	35.23	32.30	30.80	28.00



RECOMMENDED P.C.B LAYOUT
(TOLERANCE: ±0.05)

Ordering Information

XB-X20-PCB-112-A001 XX A 001 D X Z X

No. of Pins per Row: 02~15
 Standard Plating: 22=Matte Tin, Selective Plating: 01=Tin, 02=Gold Flash
 Color: 1=Black, R=Red
 Standard Packing: H=Mylar+Tape&Reel, Selective Packing: D=Tape&Reel

东莞市溪榜电子有限公司 DONG GUAN XI BANG ELECTRONICS CO., LTD	3RD.ANG PROJ. 	GENERAL TOLERANCE		DESIGNED:	DATE:	DWG. NO. XB-X20-PCB-112-A001	TITLE. Pitch 2.00mm SMT Wafer Connector
		.X'±3.0'	X.±/				
REV. A	UNIT. mm	SCALE. 1:1	PAGE. 1/1	.X'±2.0'	.X±0.30	PART NO.	
				.XX'±1.5'	.XX±0.25		
				.XXX'±1.0'	.XXX±0.15		
				APPROVED:	DATE:		