

1 2 3 4 5 6 7 8 9

F

F

E

E

D

D

C

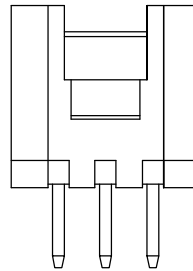
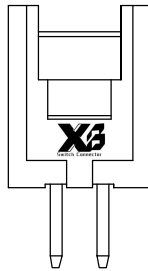
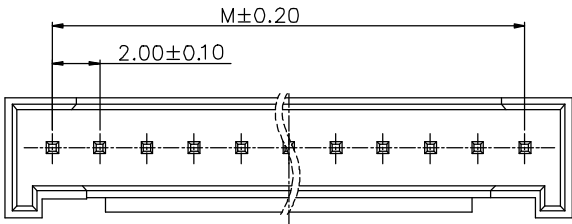
C

B

B

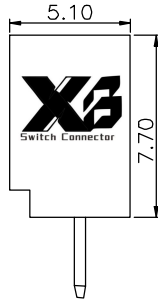
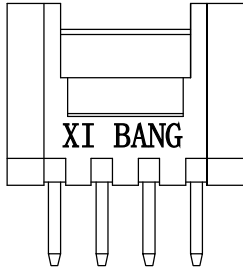
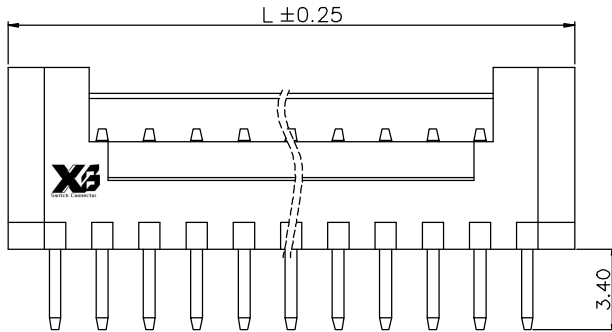
A

A



Specifications:
Current rating(额定电流):3A AC/DC.
Voltage rating(额定电压):250V AC/DC
Temperature range(工作温度):-40°C~+105°C
Contact resistance(接触电阻):30mΩ Max
Insulation resistance(绝缘电阻):1000MΩ Min
Withstanding voltage(耐压值):1000V AC/minute
Material
Housing:PA66 UL94V-0
PIN:Brass

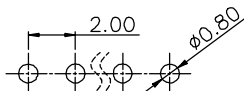
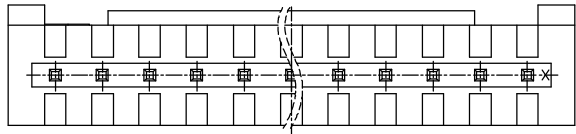
No. of PIN/ROW	Dimensions	
	M	L
02	2.00	6.00
03	4.00	8.00
04	6.00	10.00
05	8.00	12.00
06	10.00	14.00
07	12.00	16.00
08	14.00	18.00
09	16.00	20.00
10	18.00	22.00
11	20.00	24.00
12	22.00	26.00
13	24.00	28.00
14	26.00	30.00
15	28.00	32.00
16	30.00	34.00



5-16P

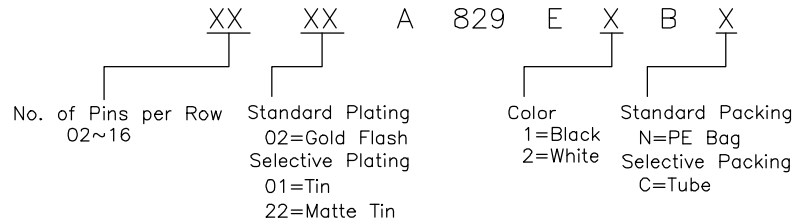
4P

无“K”



Recommended P.C.B Layout
(Tolerance=±0.05)

Ordering Information



东莞市溪榜电子有限公司 DONG GUAN XI BANG ELECTRONICS CO., LTD	3RD.ANG PROJ.	GENERAL TOLERANCE		DESIGNED:	DATE:	DWG. NO.	TITLE.
		X.±5.0'	X.±/	CHECKED:	DATE:	XB-X20-PCB-102-A829	
		.X'±3.0'	.X±0.30	APPROVED:	DATE:	PART NO.	
REV. A	UNIT. mm	SCALE. 1:1	PAGE. 1/1				

1 2 3 4 5 6 7 8 9